

DOCUMENT 00 90 00
ADDENDUM

ADDENDUM NO. [2] Date: March 6, 2018

**RE: SCHOOL DISTRICT OF HOLMEN
HIGH SCHOOL AND MIDDLE SCHOOL SECURE ENTRANCES
HOLMEN, WISCONSIN 54636
HSR PROJECT NO. 17071**

FROM: HSR Associates, Inc
100 Milwaukee Street
La Crosse, WI 54603
(608) 784-1830

To: Prospective Bidders

This addendum forms a part of the Contract Documents and modifies the original Bidding Documents dated February 2018. Acknowledge receipt of this Addendum in the space provided on the bid form. Failure to do so may subject the Bidder to disqualification.

This Addendum consists of [2] pages and [5] 24 x 36 drawings.

CHANGES TO SPECIFICATIONS:

1. Section 07 21 19 FOAMED-IN-PLACE INSULATION

a. 2.02: Add Item F as follows:

F. Overcoat: Cementitious type, spray applied; flame spread index and smoke developed index as required by code when tested in accordance with ASTM E84. Coating shall cover all foam insulation and provide a 15 minute barrier complying with ASTM E119.

Manufacturers:

W.R. Grace: Monokote Z-106

International Cellulose Corp.: Ure-K Spray Coating

Fire Retardants Inc: Burn Barrier 50-50. www.fireretardantsinc.com

Flame Stop Inc.: Flame Stop ID-S. www.flamestop.com

2. Section 08 71 00 DOOR HARDWARE

a. High School Group 1

i. Change "2 Actuators" to "1 Actuator"

ii. Change actuator model to "8310-3860TW". Change actuator model to "8310-3860TW". Kit contains two actuators and required accessories

b. Middle School Group 3

i. Change "2 Actuators" to "1 Actuator"

ii. Change actuator model to "8310-3860TW". Kit contains two actuators and required accessories.

CHANGES TO DRAWINGS - High School

3. Sheet A100 FLOOR PLAN
 - a. Check-in 101: Reverse the swing of door 101A.
4. Sheet A300 SECTIONS
 - a. 1A300: At note above Vestibule 100 ceiling that starts with "cut access...", delete "batt" and replace with "blown". Also add "Attic space side of access panels shall be insulated to match R-value of ceiling. Batts or rigid is acceptable. Rigid foam will need to be entirely covered with ½ inch gyp bd."
5. Sheet M100R1 HVAC DUCTWORK AND PIPING REMODEL PLANS 24 x 36 attached hereto
 - a. Revisions clouded on Drawing.
6. Sheet E100R ELECTRICAL PLANS 24 x 36 attached hereto
 - a. Revisions clouded on Drawing
7. Sheet E101R ELECTRICAL PLAN AND SCHEDULES 24 x 36 attached hereto
 - a. Revisions clouded on Drawing
 - b. Light fixture schedule: fixture types AL,ALE and BD Change catalog number to "LSER" series in lieu of (LTRE).

CHANGES TO DRAWINGS - Middle School

8. Sheet E090R ELECTRICAL REMOVAL PLANS 24 x 36 attached hereto
 - a. Revisions clouded on Drawing
 - b. Light fixture schedule: fixture types A, AD, AL, ALE, B and BD; Change catalog number to "LSER" series in lieu of (LTRE).
9. Sheet E100R POWER AND LIGHTING PLANS 24 x 36 attached hereto
 - a. Revisions clouded on Drawing

END OF DOCUMENT 00 90 00



HSR ASSOCIATES INC.
100 MILLWAUKEE STREET
LA CROSSE, WISCONSIN
PHONE: 608.784.1830
FAX: 608.782.5844
WEB SITE: www.hsrasociates.com

**SCHOOL DIST. OF HOLMEN
SECURE ENTRANCES**

1001 McHUGH ROAD
HOLMEN, WI 54636
HVAC REMOVAL AND REMODEL PLANS

HSR Project Number:
17071

Project Date:
2/20/18

Drawn By:
KKI

Key Plan:

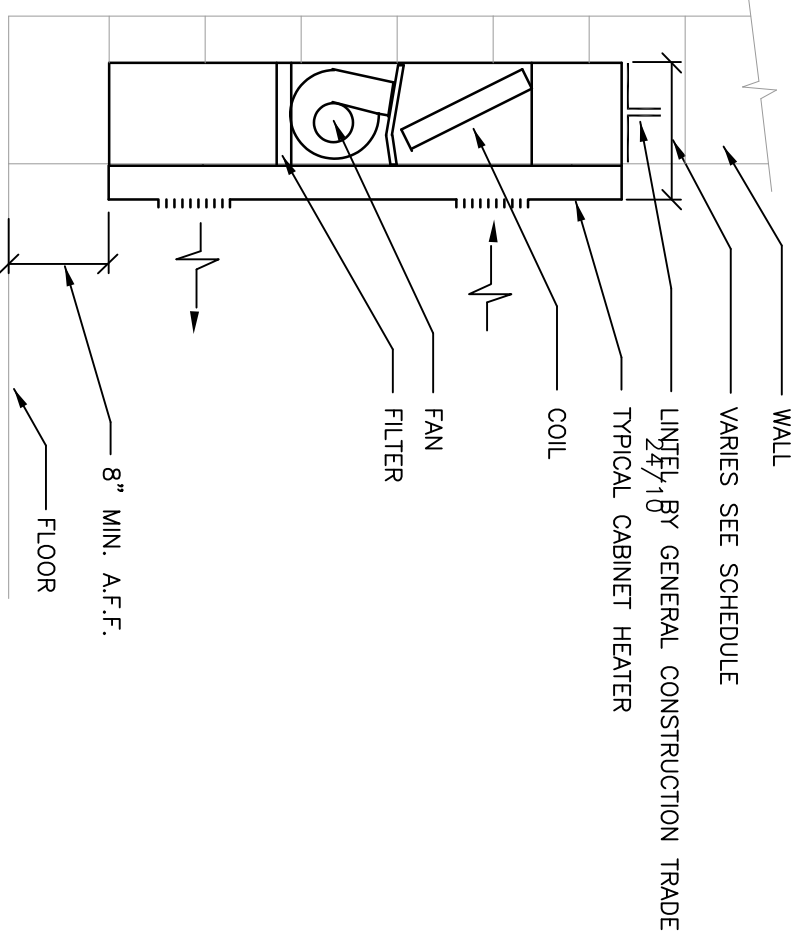
Revisions:

No.	Description	Date
A1	ADDENDUM #1	3/1/2018
A2	ADDENDUM #2	3/6/2018

VARIES

3/5/2018

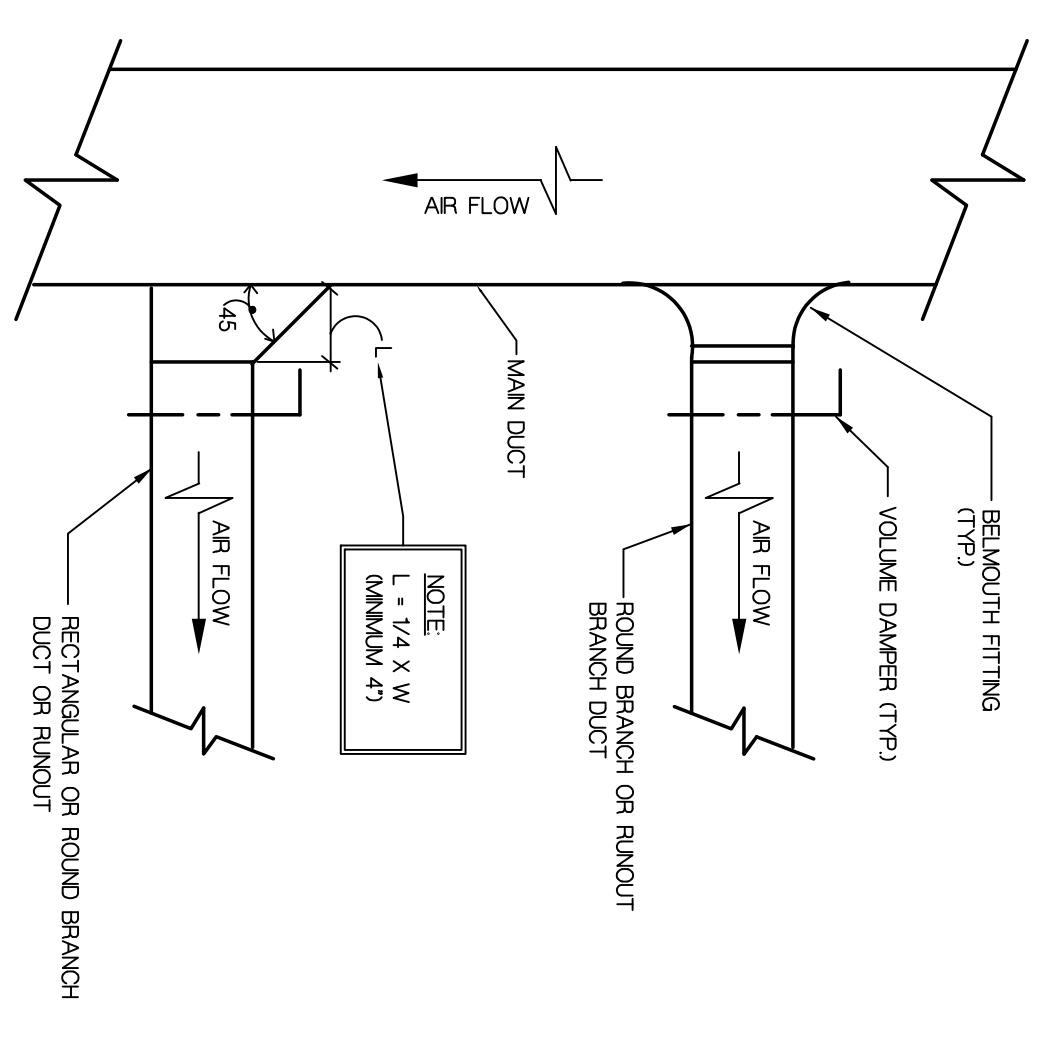
M100R1



3 TYPICAL RECESSED CABINET HEATER

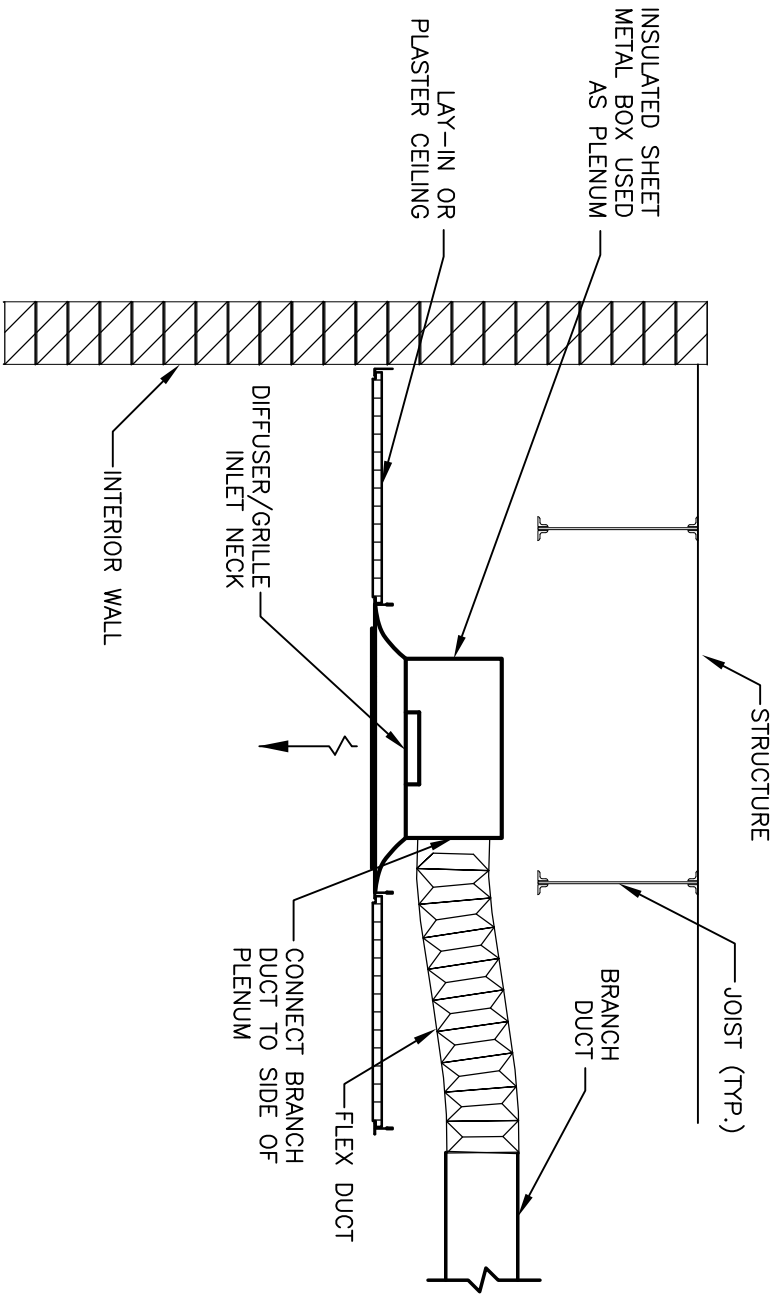
N.T.S.

1-1/8"



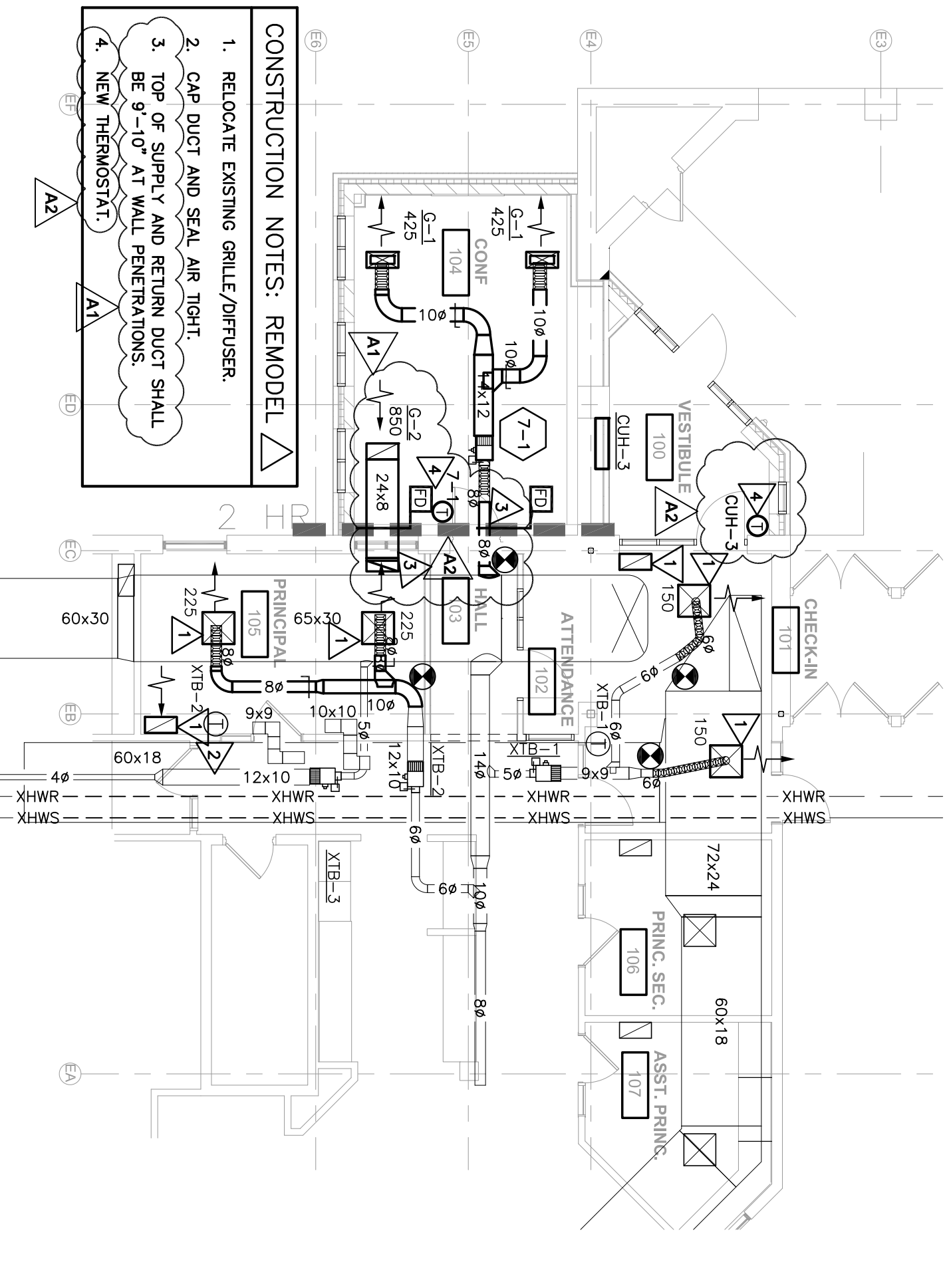
5 TYPICAL BRANCH DUCT TAKE-OFF

N.T.S.



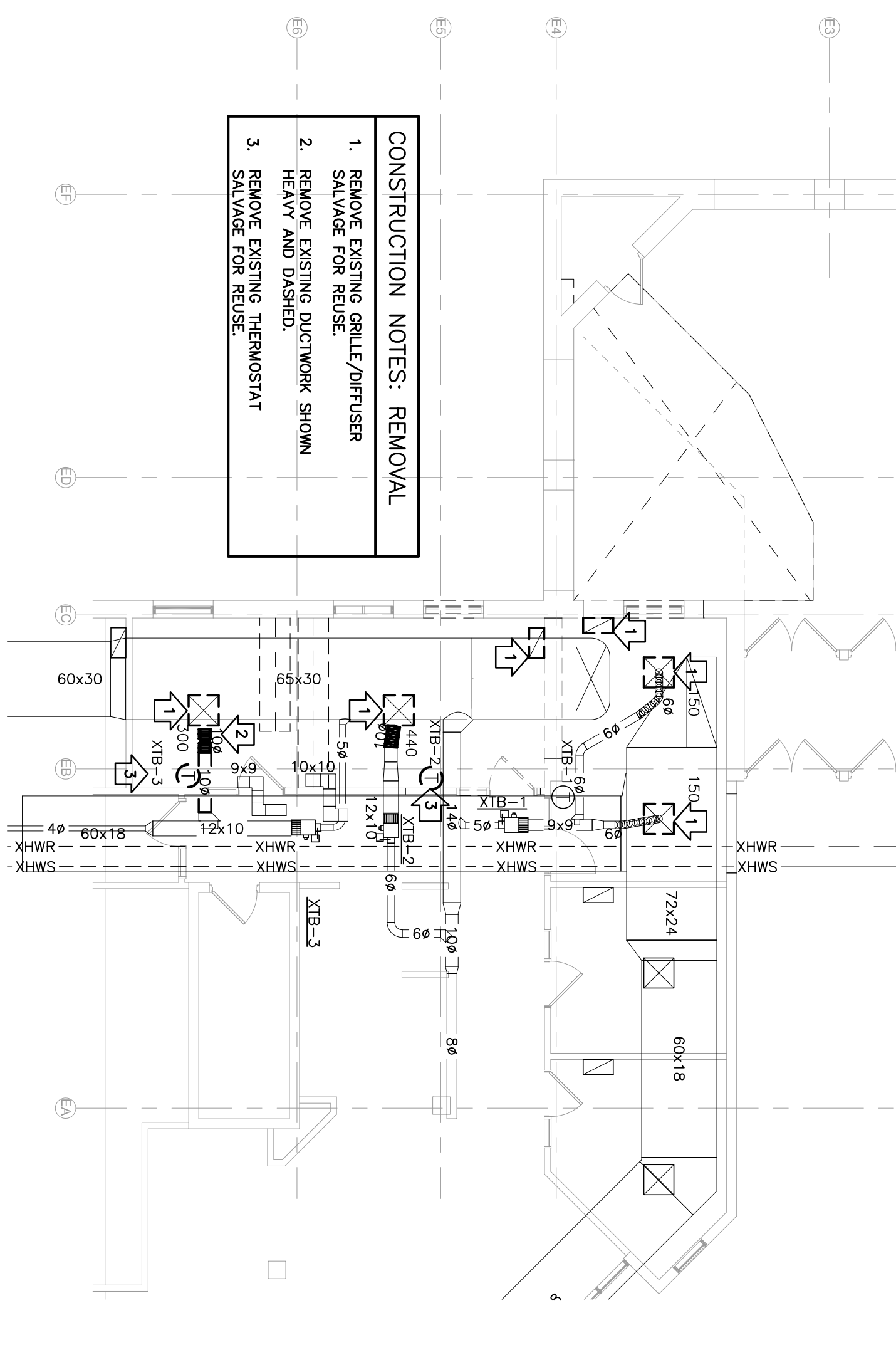
6 DIFFUSER/GRILLE PLENUM CONNECTION DETAIL

N.T.S.



2 HVAC REMODEL PLAN

1/8" = 1'-0"



AIR DISTRIBUTION DEVICES

UNIT REF.	FIXTURE TYPE	SIZE	LOCATION	DAWPER	NLET SIZE	MODEL NO.	MOUNTING	REMARKS
G-1	SUPPLY	8 X 20	CEILING	YES	6 X 18	SSH	LAY-IN	1,2,3,4,5,6,7
G-2	TRANSFER	12 X 24	CEILING	NO	10 X 22	EGS5	LAY-IN	1,2,3,4,5,6,7

REMARKS:

- BORDER TYPES SHALL BE COMPATIBLE WITH ARCHITECTURAL CEILING TYPE FOR THE ROOM IN WHICH THE AIR DEVICE IS LOCATED.
- SEE THE PLANS FOR LOCATION, AIRFLOWS, AND AIR QUANTITIES.
- ALL AIR DEVICES SHALL BE TESTED IN ACCORDANCE WITH ASHRAE STANDARD 70-91.
- ALL AIR DEVICES SHALL BE TESTED IN ACCORDANCE WITH ASHRAE STANDARD 70-91.
- ALL THROW VALUES ARE ISOTHERMAL AND MEASURED IN FEET.
- ALL PRESSURE VALUES ARE IN INCHES, W.G.
- FLOWRATE FOR CONTINUOUS LINEAR DEVICES IS IN CFM/FT.

CABINET UNIT HEATER

UNIT TAG	ROOM NUMBER	MEH NO.	MODEL NO.	SIZE	FILL DEPTH	RECESS DEPTH	WCE	CABINET HIGH	FRONT PANEL SIZE	GVW CFM	HP	REMARKS	
CUH-3	VESTIBULE 100	18.2	RFW-350	02	10	9-3/4	38.2	24	41 x 27	1.7	250	1/12(20/1)	1,2,3,4,5

REMARKS:

- BASED ON PRODUCT BY RITLING.
- SEE DETAIL, 5/100 FOR INSTALLATION.
- PRODUCT IS BASED ON MODEL NO. 1.
- PRODUCT IS BASED ON MODEL NO. 1.
- UNIT SHALL HAVE HIGH STATIC MOTOR.

VAV BOXES

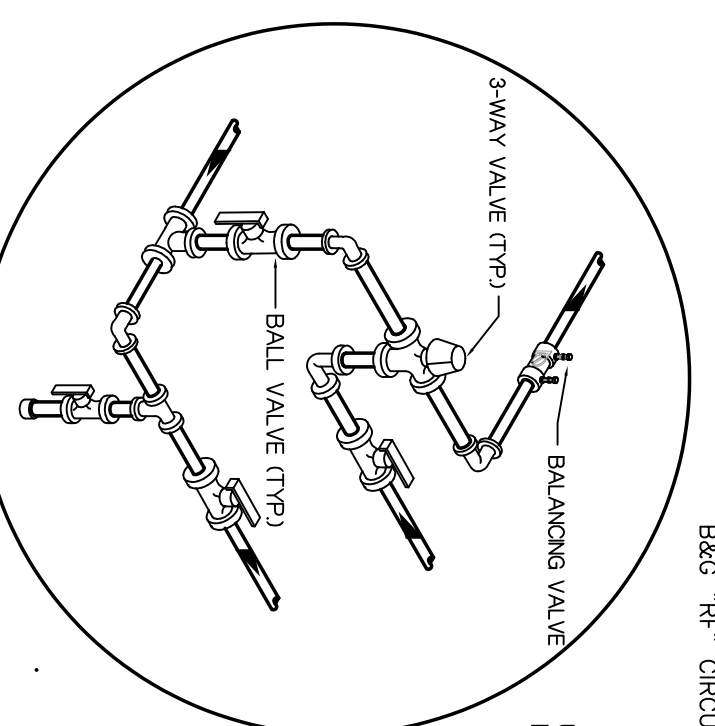
UNIT NO.	SERIES ROOM	MODEL NO.	NLET SIZE	MAX DUCT CFM	MAX COOLING HEATING CFM	AVAILABLE DESIGN NLET SP DROP	MAX DOWNSTREAM UNIT DROP	NC LEVEL	COIL SIZING AND CAPACITY DATA	COIL FLOW RATE	COIL TYPE	COIL FLOW RATE	COIL TYPE	ENT. AIR TEMP.	ROOM HTG. SETPOINT	TOTAL MEH NO.	REMARK
7-1	107108 offices	VCWF	8" x 8"	850	400	0.62	0.37	29	2-ROW	3.5	3.6	180	159.2	53.0	75	12.67	1, 2

NOTES:

- DESIGN NLET STATIC PRESSURE IS THE STATIC PRESSURE AVAILABLE SP AT THE BOX NLET IN INCHES WIG FROM STATIC REGAN.
- MAXIMUM UNIT STATIC PRESSURE INCLUDES THE SP DROP THRU THE BOX AT FULL AIR FLOW AS WELL AS THE SP DROP THRU THE REPEAT COIL AT FULL AIR FLOW IN INCHES WIG.
- HEATING COIL CAPACITY IS DETERMINED AT MINIMUM BOX CFM AND INCLUDES SPACE HEAT LOSS PLUS REPEAT LOAD.

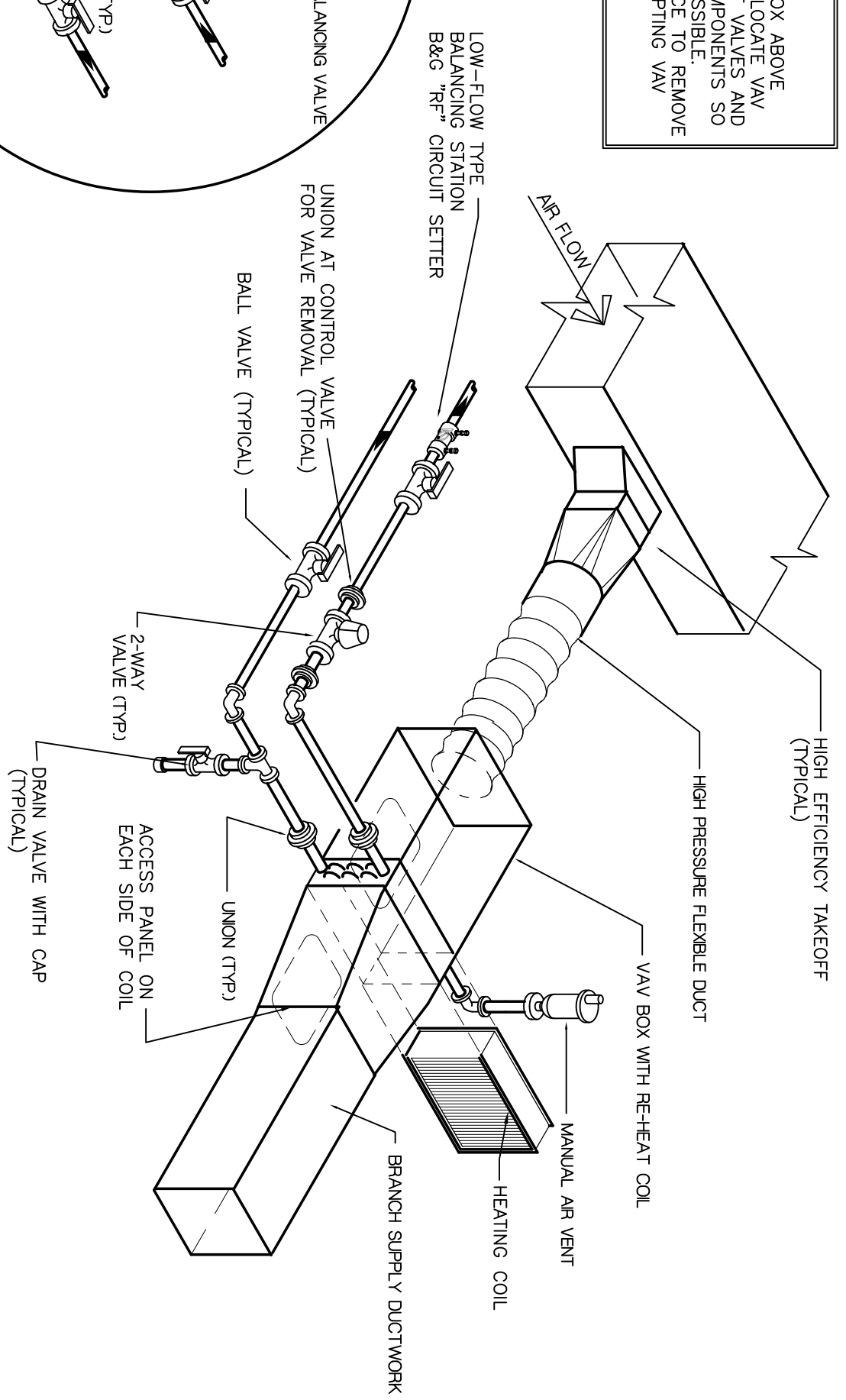
REMARKS:

- BASED ON PRODUCT BY TRANE.
- UNIT WILL HAVE 2-WAY VALVE. SEE DETAIL, 4/100.



4 DETAIL @ TYPICAL TAKE-OFF TO VAV BOX

N.T.S.

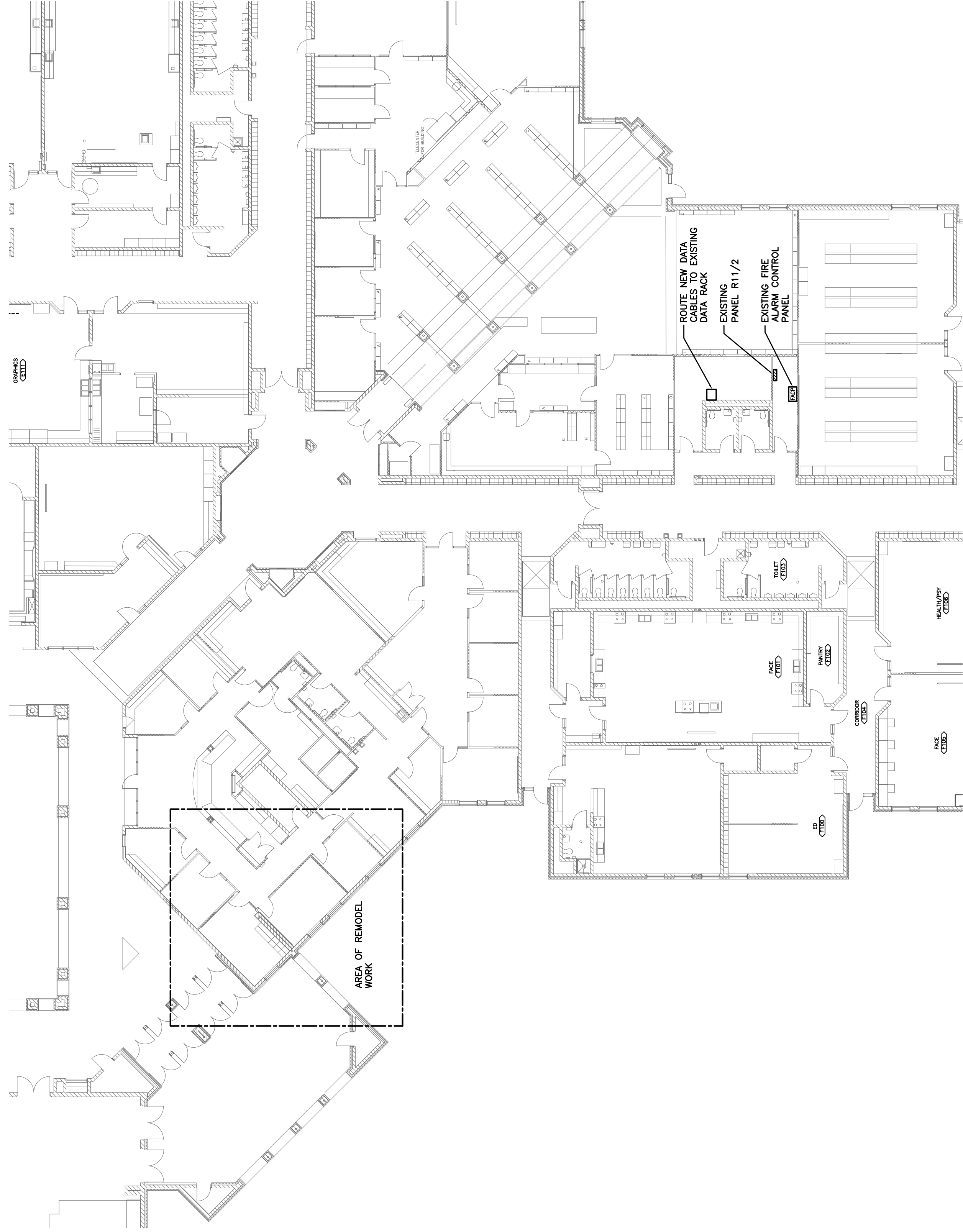


NOTE: PIPING AND DUCTWORK SHALL BE INSULATED PER STATE CODE REQUIREMENTS.

NOTE: REFER TO SCHEDULE FOR UNITS WITH 3-WAY CONTROL VALVES.

NOTE: DO NOT INSTALL NEW VAV BOX ABOVE NEW WALLS OR PARTITIONS. LOCATE VAV BOX ON OTHER SIDE OF PARTITION. PROVIDE ADEQUATE CLEARANCE TO REMOVE BOX DUCTWORK OR PIPING.

HIGH SCHOOL



1 ELECTRICAL BUILDING PLAN
1/16" = 1'-0"

LIGHTING FIXTURE SCHEDULE

TYPE	MANUFACTURER	CATALOG NUMBER	DESCRIPTION	VOLT	MOUNTING **							LAMPS	REMARK NUMBER	
					F	S	P	O	NO.	WAIT	TYPE			
A	(NOT USED)													
AD	(NOT USED)													
AL	COLUMBIA	LSR22-60WGC-F	2' X 2' LAY IN TROFFER.	48VOLT	*							24	LED 4000K	1
ALE	COLUMBIA	LSR22-60WGC-F-ELL14	2' X 2' LAY IN TROFFER, EMERGENCY BATTERY	48VOLT	*							24	LED 4000K	1
B	(NOT USED)													
BD	COLUMBIA	LSR24-60WGC-ES1 HSCN2424R	2' X 4' LAY IN TROFFER, DIMMING TO 1% PENDANT WITH FIELD ADJUSTABLE CORD	48VOLT	*							42	LED 4000K	2,4
C	HALO	LFALS-4UFSL1140K	4" LED DOWNLIGHT	120/24	*							10	10MR16 4000K	5
D	PRESCOLITE	LFALS-4UFSL1140K	4" LED DOWNLIGHT	48VOLT	*							15.5	4000K	6
DE	PRESCOLITE	LFALS-4UFSL1140K-EMG	4" LED DOWNLIGHT, EMERGENCY BATTERY	48VOLT	*							15.5	4000K	6,4
X1	COMPASS	CER	EXIT LIGHT, RED LETTERS AND BATTERY	120	*							2.6	LED	7

* SEE REMARKS
** (F) FLUSH MOUNT; (S) SURFACE MOUNT; (P) PENDANT HUNG; (O) OTHER-SEE REMARKS IN REGARDS TO FIXTURE MOUNTING.

LIGHTING FIXTURE SCHEDULE REMARKS:

- 2' X 2' LENSED LED LAY-IN TROFFER.
- 2' X 4' LENSED LED LAY-IN TROFFER.
- PROVIDE WITH STEP DIMMING DRIVER.
- PROVIDE WITH DIMMING DRIVER DOWN TO 1%.
- WHITE GLASS PENDANT WITH LED MR16 LAMP AND FIELD ADJUSTABLE CORD.
- 4" LED DOWNLIGHT.
- EXIT LIGHT, WITH EMERGENCY BATTERY, RED LETTERS, WHITE FINISH.

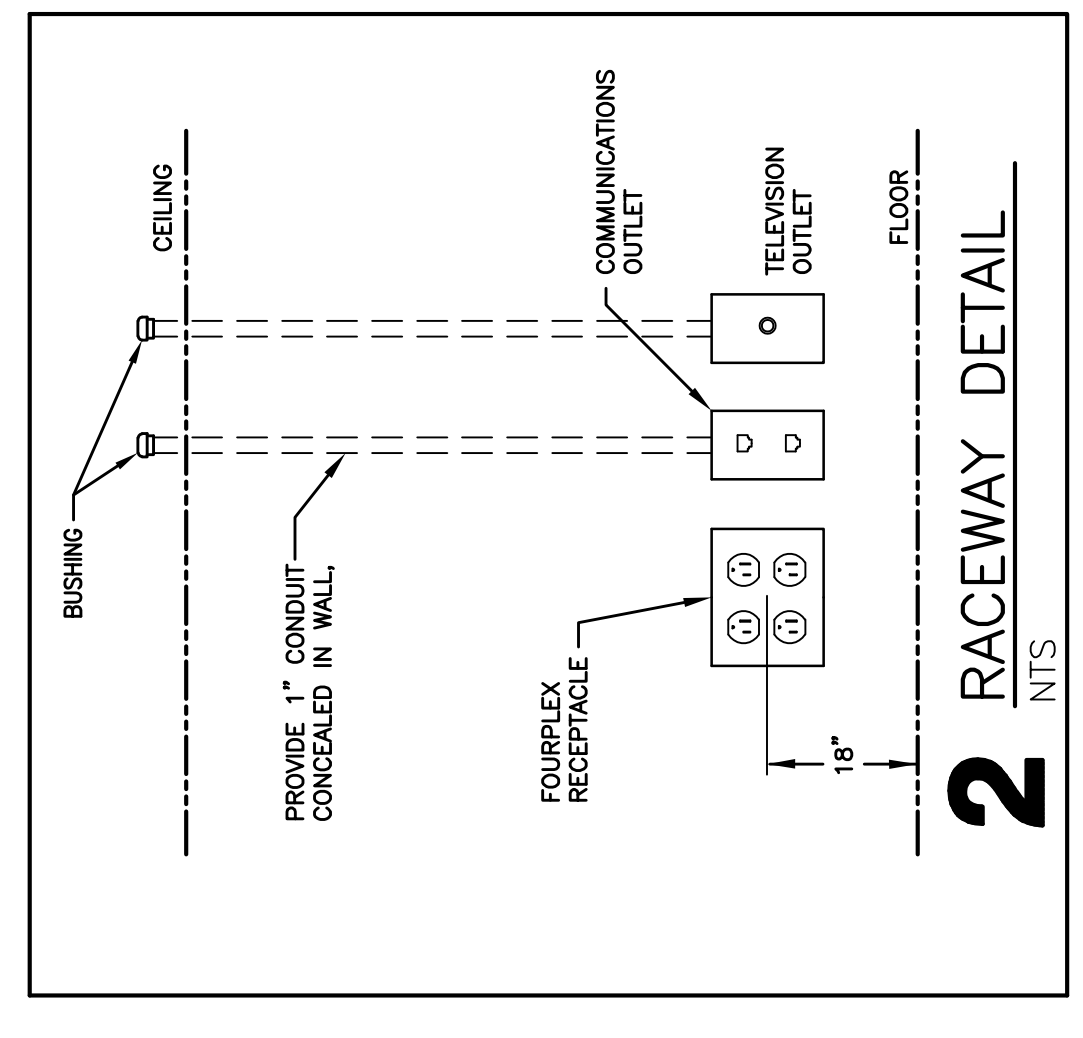
EQUAL FIXTURES BY COOPER LIGHTING, HUBBELL LIGHTING AND DAY-BRITE ARE ACCEPTABLE.

PANELBOARD SCHEDULE

PANEL NO.	ROOM NO.	MFR. TYPE	FLUSH SURFACE	WIDTH	DEPTH	ELECTRICAL SERVICE	MAINS		BRANCHES		REMARK NUMBER	
							AMP.	LUGS	NO.	AMP.		
R11/2	JAN. 133	EXISTING SQUARED NOOD	X	X		120/208 VOLT 3 PH, 4 WIRE	225	X	5	20	1	R11/2-1,2

* SEE REMARKS

PANELBOARD SCHEDULE REMARKS:
1. PROVIDE NEW CIRCUIT BREAKERS IN EXISTING PANEL.



Project Title:	School Dist of Holmen
Project Location:	502 N. Main Street, Holmen, WI 54636
HSR Project Number:	17071
Project Date:	2/20/18
Drawn By:	scott getzsjak
Key Plan:	

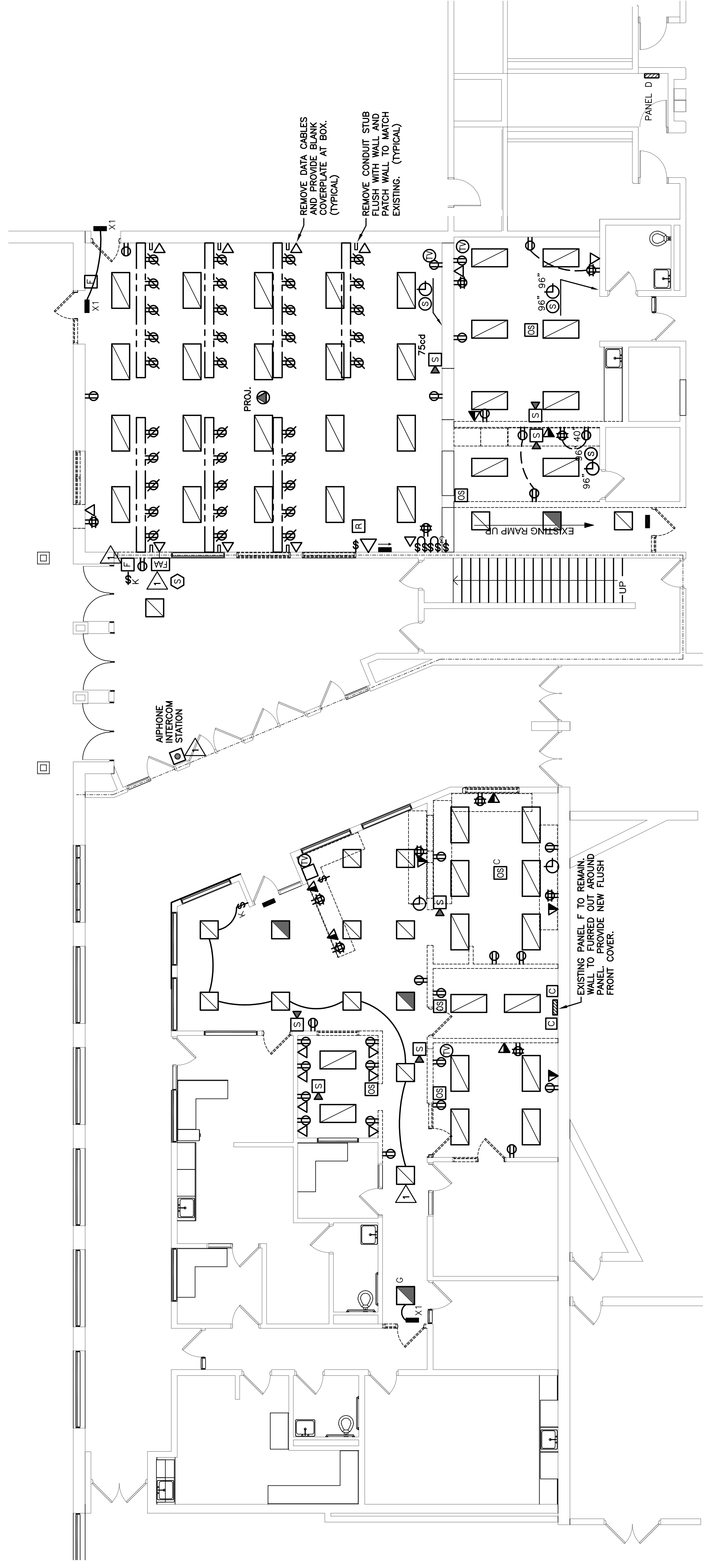
Revisions:	No.	Description	Date
	Δ2	ADDENDUM #2	03/06/2018
Graphic Scale:	VARIES		
Last Update:	03/06/18		

ELECTRICAL SYMBOLS

- LIGHTING FIXTURE DOWNLIGHT- RECESSED *
- LIGHTING FIXTURE(S) - EMERGENCY CIRCUIT/BATTERY BODINE #B74CST*
- LIGHTING FIXTURE (2'x2') - RECESSED *
- LIGHTING FIXTURE (2'x4') - EMERGENCY CIRCUIT/BATTERY, BODINE #B50ST*
- LIGHTING FIXTURE (2'x4') - RECESSED *
- LIGHTING FIXTURE (2'x4') - EMERGENCY CIRCUIT/BATTERY, BODINE #B50ST *
- EXIT SIGN
- EMERGENCY LIGHTING UNIT *
- OCCUPANCY SENSOR *
- SWITCH - SINGLE POLE
- 3 - 3-WAY SWITCH
- 4 - 4-WAY SWITCH
- K- KEY SWITCH
- STANDARD SINGLE RECEPTACLE *
- STANDARD DUPLEX RECEPTACLE *
- "GFI" GROUND FAULT INTERRUPTING
- "WP" WEATHERPROOF COVER
- "USB" COMBINATION RECEPTACLE AND USB CHARGING
- DOUBLE DUPLEX RECEPTACLE *
- "USB" COMBINATION RECEPTACLE AND USB CHARGING
- DISCONNECT SWITCH
- MOTOR STARTER
- MOTOR CONNECTION (NUMBER REFERS TO SCHEDULE)
- EQUIPMENT CONNECTION OR PROVISION (NUMBER REFERS TO SCHEDULE)
- PANELBOARD, TERMINAL CABINET
- COMBINATION VOICE/DATA OUTLET **
- COMPUTER DATA OUTLET **
- FIRE ALARM MANUAL STATION
- FIRE ALARM HORN/STROBE
- FIRE ALARM STROBE UNIT ONLY
- SMOKE DETECTOR
- DUCT SMOKE DETECTOR WITH TWO AUXILIARY CONTACTS
- SECURITY DOOR CONTACT
- SECURITY MOTION DETECTOR
- KEYCARD ACCESS STATION
- TRANSIENT VOLTAGE SURGE SUPPRESSION
- JUNCTION BOX OR PULL BOX
- PUSHBUTTON STATION
- TELEVISION OUTLET
- CLOCK
- SPEAKER *
- LEG TO PANEL
- NOTE NUMBER (REMOVAL)
- NOTE NUMBER (REMODEL)

* TYPE AS INDICATED WITH LETTER/NUMBER, REFER TO SPECIFICATIONS OR SCHEDULES.
** QUANTITIES OF CABLE DROPS AS INDICATED WITH NUMBER, REFER TO DRAWINGS. HEIGHTS AND LOCATIONS AS INDICATED ON DRAWINGS.
*** NUMBER REFERS TO LOW VOLTAGE LIGHTING RELAY, REFER TO SCHEDULE.

MIDDLE SCHOOL



1 ELECTRICAL REMOVAL PLAN
1/8" = 1'-0"

LIGHTING FIXTURE SCHEDULE

TYPE	MANUFACTURER	CATALOG NUMBER	DESCRIPTION	MOUNTING **				LAMPS		REMARK NUMBER
				V	S	P	O	NO.	WATT	
A	COLUMBIA	LSR22-40MLC-EDS	2' X 2' LAY IN TROFFER, STEP DIMMING					31	LED 4000K	1,3
AD	COLUMBIA	LSR22-40MLC-ED1	2' X 2' LAY IN TROFFER, DIMMING TO 1%					31	LED 4000K	1,4
AL	COLUMBIA	LSR22-40MLC-F	2' X 2' LAY IN TROFFER					24	LED 4000K	1
ALE	COLUMBIA	LSR22-40MLC-F-ELL14	2' X 2' LAY IN TROFFER, EMERGENCY BATTERY					24	LED 4000K	1
B	COLUMBIA	LSR24-40MLC-ESD	2' X 4' LAY IN TROFFER, STEP DIMMING					42	LED 4000K	2,3
BD	COLUMBIA	LSR24-40MLC-ES1	2' X 4' LAY IN TROFFER, DIMMING TO 1%					42	LED 4000K	2,4
C	HALO	H250041WH	PENDANT WITH FIELD ADJUSTABLE CORD					1	10MR16 4000K	5
D	PRESOLITE	LF4LS-4UFSJ1140K	4" LED DOWNLIGHT					15.5	4000K	6
DD	PRESOLITE	LF4LSM1-4UFSJ1140K	4" LED DOWNLIGHT, DIMMING TO 1%					15.5	4000K	6,4
X1	COMPASS	CER	EXIT LIGHT, RED LETTERS AND BATTERY						LED	7

- * SEE REMARKS
** (F) FLUSH MOUNT; (S) SURFACE MOUNT; (P) PENDANT HUNG; (O) OTHER-SEE REMARKS IN REGARDS TO FIXTURE MOUNTING.
- LIGHTING FIXTURE SCHEDULE REMARKS:**
- 2' X 2' LENSED LED LAY-IN TROFFER.
 - 2' X 4' LENSED LED LAY-IN TROFFER.
 - PROVIDE WITH STEP DIMMING DRIVER.
 - PROVIDE WITH DIMMING DRIVER DOWN TO 1%.
 - WHITE GLASS PENDANT WITH LED MR16 LAMP AND FIELD ADJUSTABLE CORD.
 - 4" LED DOWNLIGHT.
 - EXIT LIGHT, WITH EMERGENCY BATTERY, RED LETTERS, WHITE FINISH.
- EQUAL FIXTURES BY COOPER LIGHTING, HUBBELL LIGHTING AND DAY-BRITE ARE ACCEPTABLE.

PANELBOARD SCHEDULE

PANEL TYPE	ROOM NO.	MFR. TYPE	MOUNTING	SIZE	MAINS			BRANCHES			REMARK NUMBER	
					FLUSH	DEPTH	WIDTH	FLUSH	DEPTH	WIDTH		
PANEL D	JAN. 133	EXISTING SLD NOOD	X		225	X		16	20	1	D-1, 2-16	1
PANEL F	COMP. 116	EXISTING SLD NOOD	X		225	X		1	20	1	F-1, FEEDER TO NEW PANEL F2	1,3
PANEL F2	STORAGE 126	NEW SLD NI	X		100	X		18	20	1	F2-1, 2-18	2,4
					6	20	1	6	20	1	SPARES	
					1	60	3	1	60	3	TSSS (VERIFY BRKR. SIZE WITH MANUF.)	

- * SEE REMARKS
- PANELBOARD SCHEDULE REMARKS:**
- PROVIDE REUSE CIRCUIT BREAKERS IN EXISTING PANEL.
 - PROVIDE NEW 42 SPACE PANELBOARD WITH CIRCUIT BREAKERS.
 - PROVIDE 100 AMP CIRCUIT BREAKER IN EXISTING PANEL TO SUB-FEED NEW PANELBOARD F2.

EQUIPMENT SCHEDULE

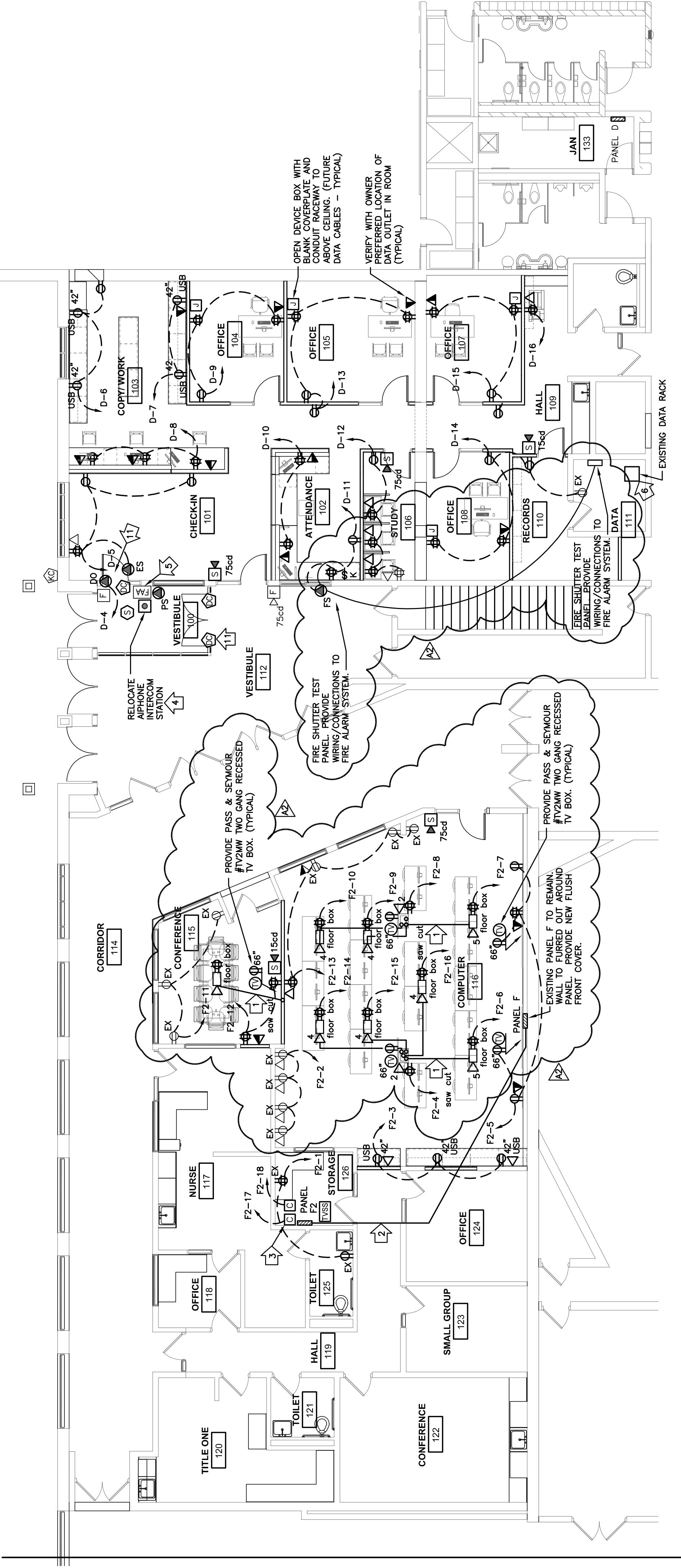
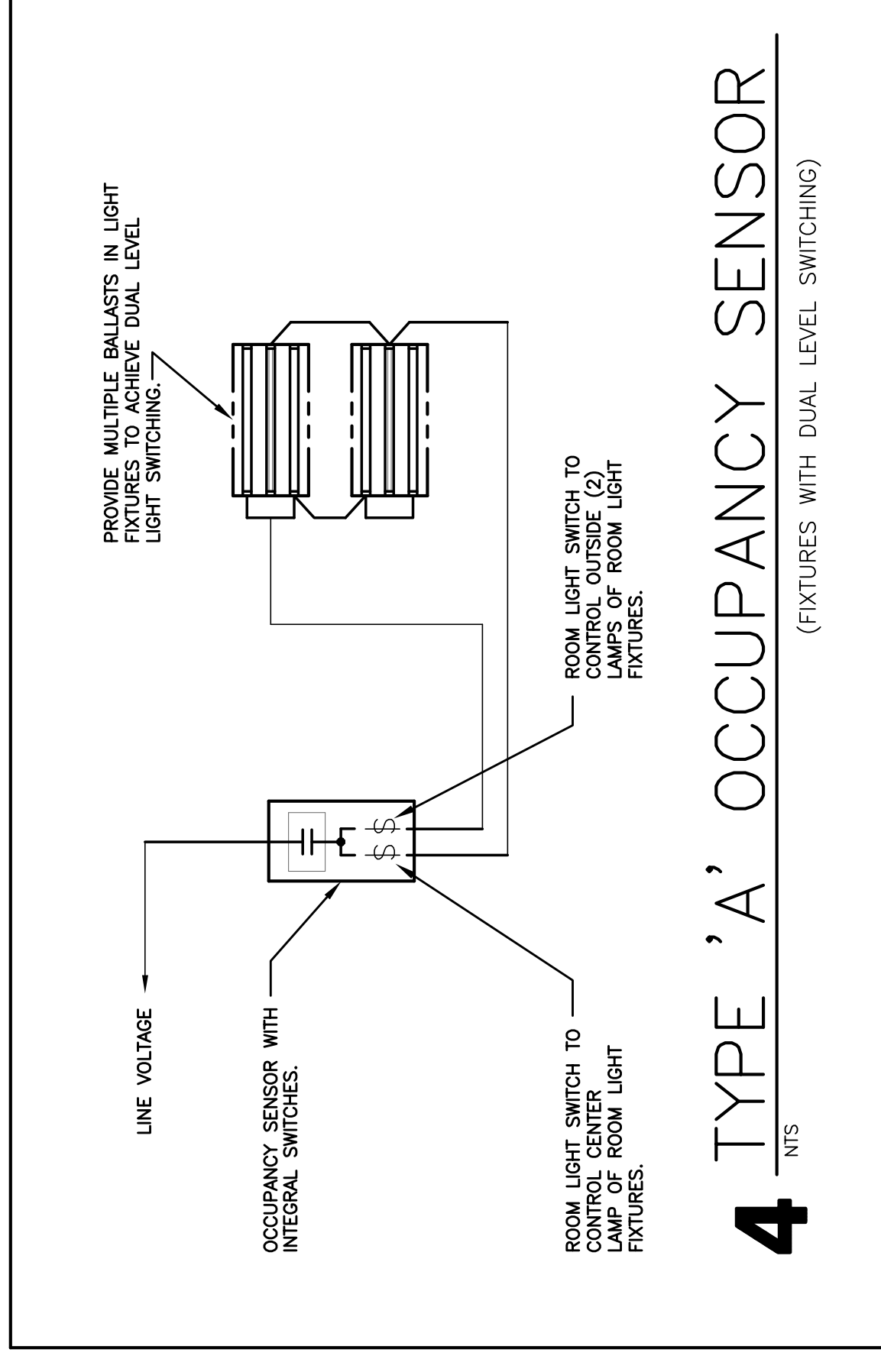
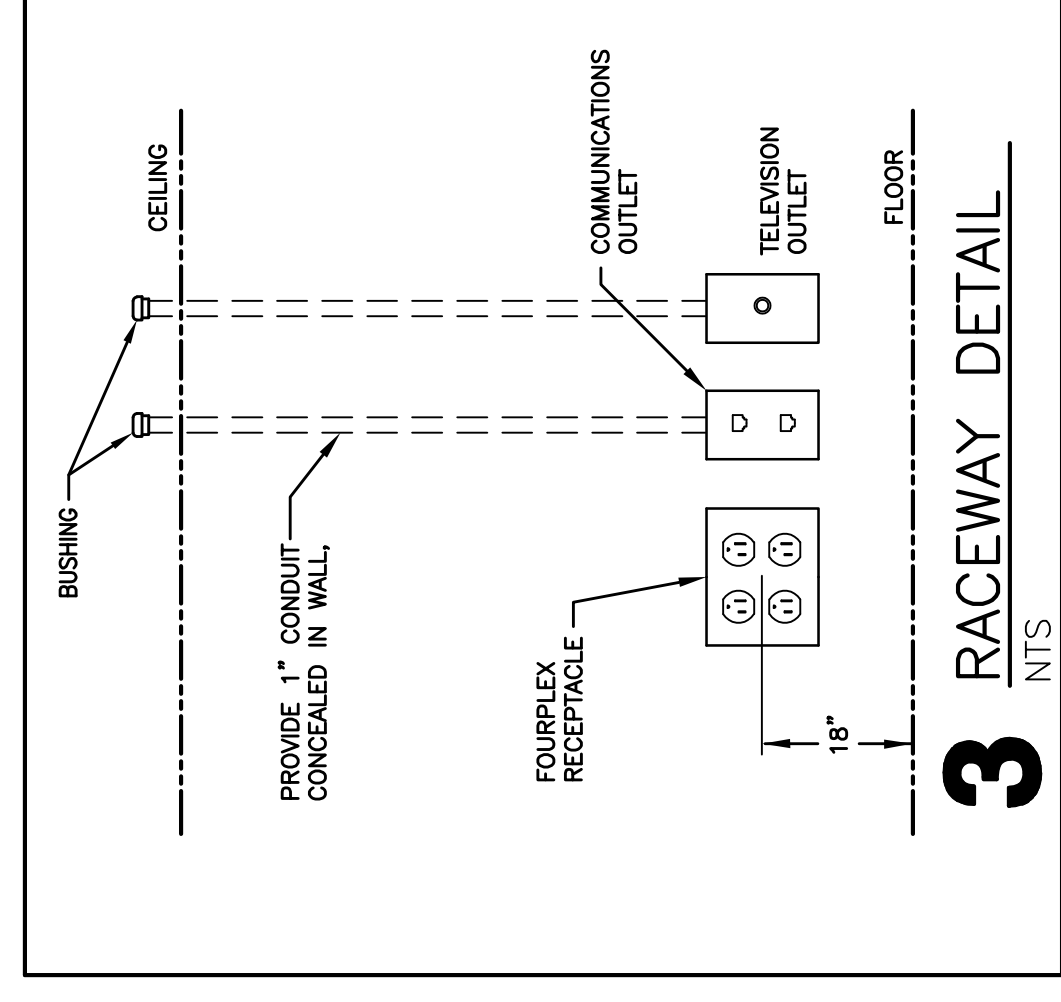
MARK NUMBER	EQUIPMENT DESCRIPTION	LOCATION ROOM NUMBER	SEE DRWS.	RATING			WIRING		REMARK NUMBER
				K.W.	H.P.	VOLT	CONDUCTORS	GROUND	
DO	DOOR OPERATORS	SEE DRWS.	.80		120	1	2	#12	1
PS	PADDLE STATION	SEE DRWS.			120/24	1	2	#12	2
ES	ELECTRIC DOOR STRIKE	SEE DRWS.	.25		120/24	1	2	#12	2

- * SEE REMARKS
- EQUIPMENT SCHEDULE REMARKS:**
- PADDLE STATIONS ARE BATTERY POWERED. NO WIRING REQUIRED.
 - PROVIDE CONDUIT RACEWAY INTO DOOR FRAME. LOW VOLTAGE WIRING IS BY DOOR ACCESS PROVIDER.

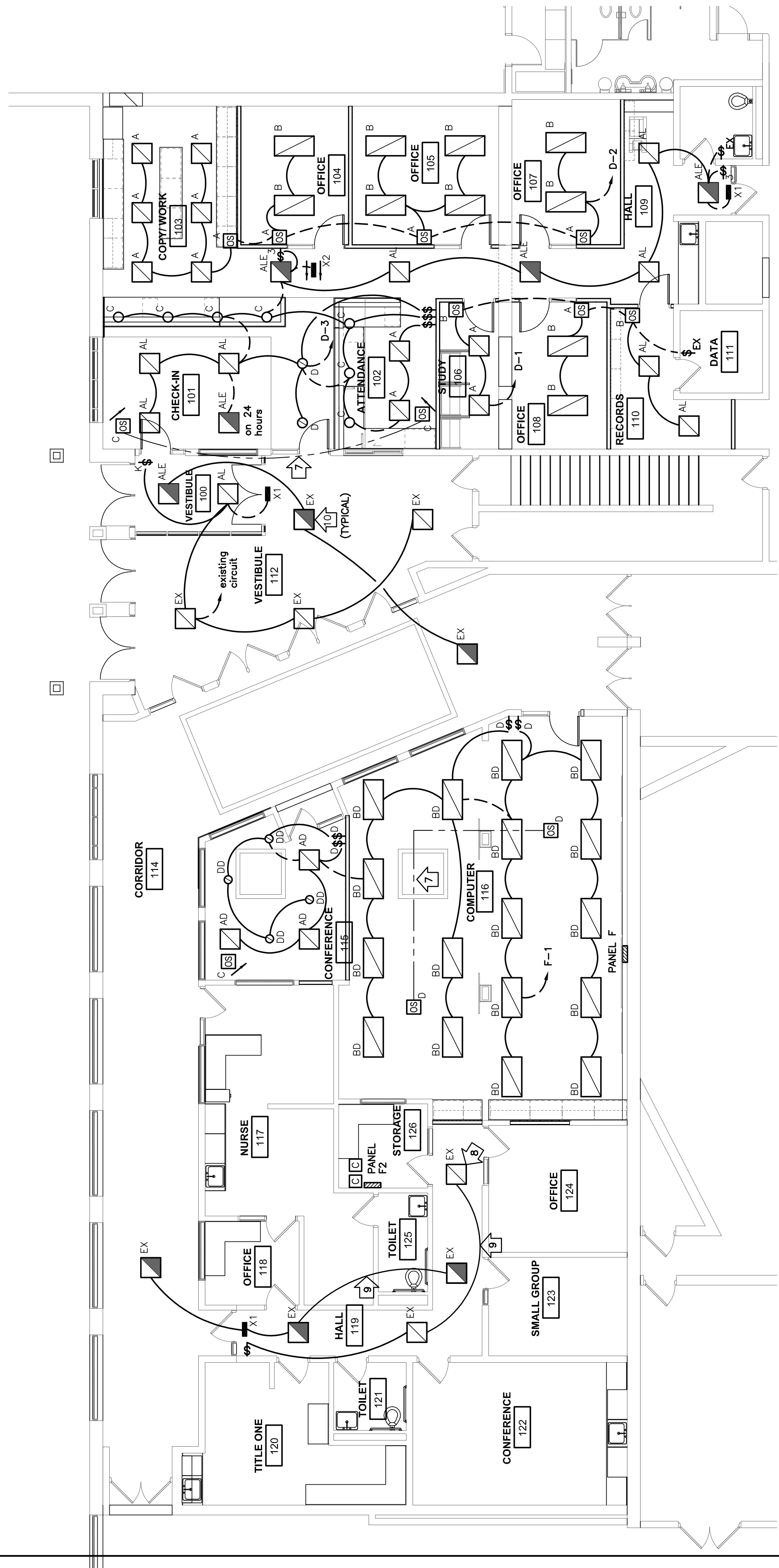
- CONSTRUCTION NOTES: REMOVAL**
- GENERAL NOTES:**
- REMOVE ALL ELECTRICAL DEVICES SHOWN AND ABANDON WIRING/CONDUIT BACK TO ELECTRICAL PANEL, CABINET, OR TERMINATION BOARD.
 - ELECTRICAL CONTRACTOR TO INCLUDE ALL DEVICES REQUIRED FOR REMOVAL. MAINTAIN OPERATION OF ALL EXISTING RECEPTACLES AND DEVICES TO REMAIN. PROVIDE NEW HOMERUNS OF CONDUIT/WIRING WHERE REQUIRED.
 - SALVAGE LIGHT FIXTURES, SMOKE DETECTORS, SPEAKERS, AND FIRE ALARM HORN/STROBES FOR REINSTALLATION.
 - PROVIDE COVERPLATES AT ALL OPEN DEVICES AND JUNCTION BOXES.
 - SALVAGE CLOCKS TO OWNER.
- SPECIFIC NOTES:**
- SALVAGE EXISTING DEVICE FOR REINSTALLATION.

MIDDLE SCHOOL

- CONSTRUCTION NOTES: REMODEL**
- GENERAL NOTES:**
- ALL ELECTRICAL DEVICES SHOWN TO BE NEW, UNLESS INDICATED OTHERWISE.
 - MAINTAIN OPERATION OF ALL EXISTING ELECTRICAL DEVICES, EXCEPT WIRING/CONDUIT TO LIGHTS, RECEPTACLES, CLOCKS, INTERCOM, SPEAKERS, ETC.
 - PROVIDE GROUND CONDUCTOR IN ALL NEW CONDUITS.
 - REINSTALL EXISTING LIGHTS, SMOKE DETECTORS, SPEAKERS, AND FIRE ALARM HORN/STROBES WHERE INDICATED. PROVIDE NEW CONDUIT AND WIRING AS REQUIRED.
 - PROVIDE FIRE STOPPING AND SMOKE DRAFT STOPPING AT ALL CONDUIT PENETRATIONS. SPECIFICATION SECTION 07840 FOR FIRE RESISTIVE AND NON-FIRE RESISTIVE ASSEMBLIES.
 - PROVIDE SEPARATE NEUTRAL CONDUCTORS FOR EACH BRANCH CIRCUIT. (NO COMMON NEUTRALS)
- SPECIFIC NOTES:**
- SMK-OUT EXISTING CONCRETE FLOOR FOR INSTALLATIONS OF NEW FLOOR BOXES AND 1" x 1/4" CONDUIT RACEWAYS (TYPICAL).
 - PROVIDE 100 AMP FEEDER TO NEW PANEL F2 LOCATION.
 - REINSTALL EXISTING LIGHTING CONTACTORS; PROVIDE NEW CONDUIT AND WIRING TO EXISTING LIGHT FIXTURES.
 - REINSTALL EXISTING ALPHABET INTERCOM AT NEW LOCATION. PROVIDE NEW WIRING AND CABLES AS REQUIRED. MATCH EXISTING.
 - REINSTALL FIRE ALARM ANNUNCIATION PANEL AT NEW LOCATION. PROVIDE NEW WIRING AND CABLES TO EXISTING FIRE ALARM PANEL. FIELD VERIFY LOCATION OF EXISTING FIRE ALARM PANEL.
 - ROUTE ALL NEW DATA CABLES TO THIS LOCATION.
 - INTERLOCK ROOM OCCUPANCY SENSORS TO CONTROL ROOM LIGHTING.
 - REINSTALL EXISTING LIGHT FIXTURE AT NEW LOCATION.
 - EXTEND EXISTING SWITCH-LEG WIRING.
 - EXISTING (EX) LIGHT FIXTURE OR DEVICE TO REMAIN. (TYPICAL)
 - PROVIDE CONDUIT INTO DOOR FRAME FOR WIRING OF SECURITY DEVICES BY THE OWNER.



1 FIRST FLOOR POWER PLAN
1/8" = 1'-0"



2 FIRST FLOOR LIGHTING PLAN
1/8" = 1'-0"